

Mechanisms

Hoist unit H100FL63-820	2 – Part line				
135hp(100kW) AC Hoist unit	Gear	Capacity	line speed	Capacity	line speed
	1	27,562 lbs	@ 40 fpm	12,500 kg	@ 12m/min
	2	27,562 lbs	@ 124 fpm	12,500 kg	@ 37.5m/min
	3	13,780 lbs	@ 248 fpm	6,250 kg	@ 75m/min
	4	8,379 lbs	@ 372 fpm	3,800 kg	@ 112.5m/min
	5	4,410 lbs	@ 497 fpm	2,000 kg	@ 150m/min
	4 – part line				
	1	55,125 lbs	@ 20 fpm	25,000 kg	@ 6m/min
	2	55,125 lbs	@ 62 fpm	25,000 kg	@ 18.75m/min
	3	27,562 lbs	@ 124 fpm	12,500 kg	@ 37.5m/min
	4	16,758 lbs	@ 185 fpm	7,600 kg	@ 56m/min
	5	2,280 lbs	@ 248 fpm	4,000 kg	@ 75m/min
	2 – Part line		2,296 ft (5layers) 700 m (5layers)		

Motor information

Drive unit	Horsepower	kilowatts	Speed	
Trolley (VFD)	15hp	11kW	Up to 331 fpm	Up to 100 m/min
Slewing	4x10hp	4x7.5kW	1.0 rpm	

Power requirements

480V phase-phase, 277V each phase to ground with 120°phase shift.
3-phase, 60Hz power supply plus ground wire.

BUILT TO PERFORM

T8030-25



ZOOMLION
NORTH AMERICA

Zoomlion Heavy Industry NA, Inc.

14215 Two Mile Road, Yorkville, WI 53126

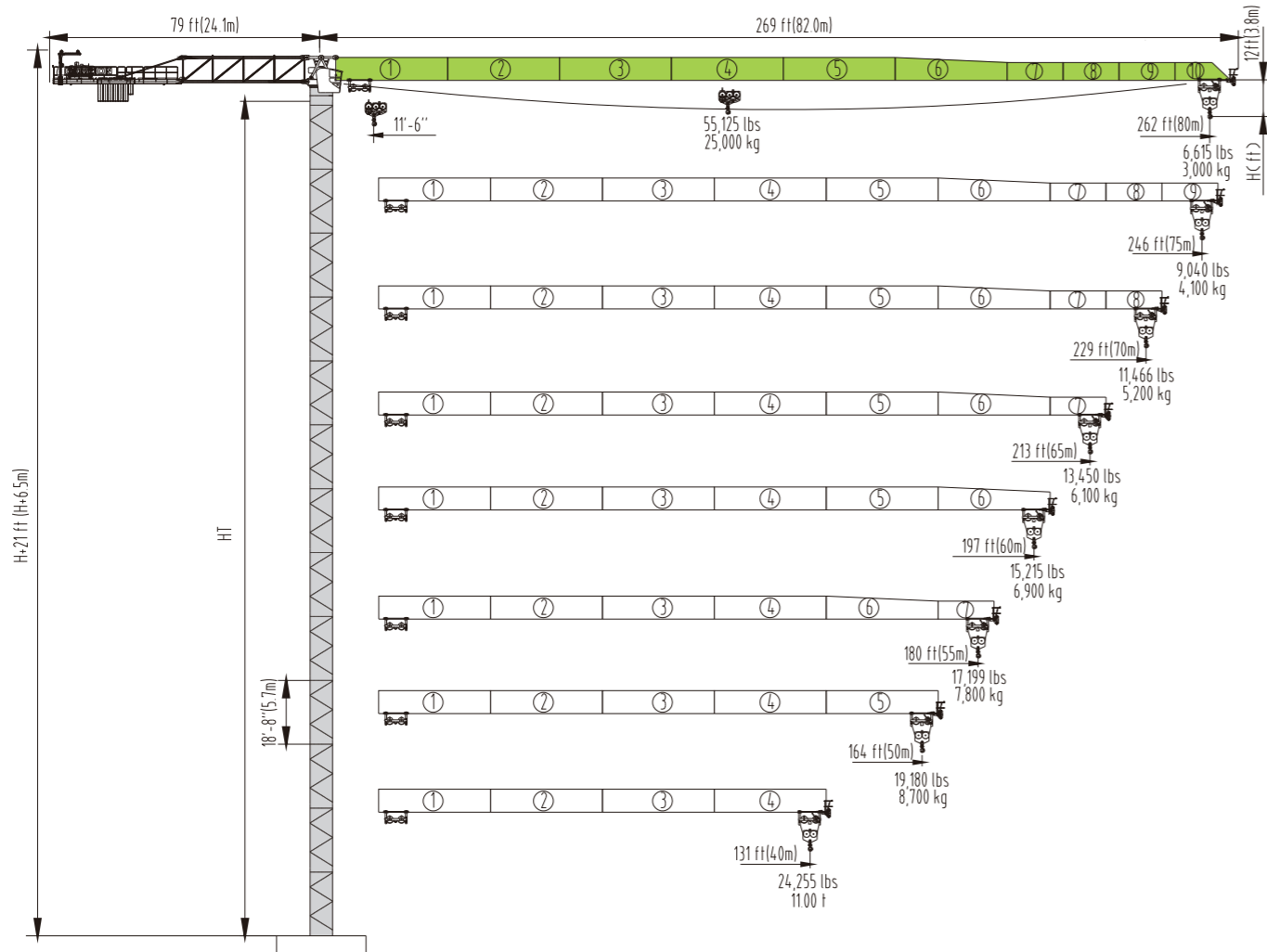
Email: sales@zoomlion-na.com

Phone: +1 (262)-835-1828

Copyright©2019 Zoomlion. All rights reserved. Reproduction and copying of any part of contents is not allowed for any purposes without Zoomlion's approval.

ZOOMLION

T8030-25



Maximum Free-standing Height

Tower Configurations	Tower Height HT	Height under hook (H)
X23Dx13pcs	244 ft 74.45m	239 ft 72 m
X23Dx13pcs +X23E1pcs	236 ft 71.95m	231 ft 70 m

* For top climbing must use 1 unit of X23E instead of X23D. X23E tower height is 3.2m.

			PHZ5600	PHZ4500
262 ft 80 m	79ft 24.1m	84,010 lbs 38,100 kg	6 pcs	1 pcs
246 ft 75 m		84,010 lbs 38,100 kg	6 pcs	1 pcs
229 ft 70 m		81,585 lbs 37,000 kg	5 pcs	2 pcs
213 ft 65 m		79,159 lbs 35,900 kg	4 pcs	3 pcs
197 ft 60 m		74,088 lbs 33,600 kg	6 pcs	0 pcs
180 ft 55 m		66,811 lbs 30,300 kg	3 pcs	3 pcs
164 ft 50 m		61,740 lbs 28,000 kg	5 pcs	0 pcs
131 ft 40 m		49,392 lbs 22,400 kg	4 pcs	0 pcs

Radius and capacities

for 2-Part operation

Hook Radius	2-Part line Max.Capacity/Radius	ft m	82 25.0	98 30.0	115 35.0	131 40.0	139 42.5	148 45.0	155 47.5	164 50.0	180 55.0	197 60.0	213 65.0	230 70.0	246 75.0	262 80.0
262 ft 80 m	90 ft / 27,560 lbs 27.6m/12,500 kg	lbs kg	27,560 12,500	24,920 11,300	20,640 9,360	17,460 7,920	16,162 7,330	15,020 6,810	14,000 6,350	13,075 5,930	11,490 5,210	10,190 4,620	9,085 4,120	8,140 3,690	7,320 3,320	6,615 3,000
246 ft 75 m	103 ft / 27,560 lbs 31.6m/12,500 kg	lbs kg	27,560 12,500	24,390 11,060	20,730 9,400	19,227 8,720	17,900 8,120	16,735 7,590	15,680 7,110	13,850 6,280	12,350 5,600	11,070 5,020	9,990 4,530	9,040 4,100		
229 ft 70 m	114 ft / 27,560 lbs 34.9m/12,500 kg	lbs kg	27,560 12,500	27,430 12,440	23,370 10,600	21,719 9,850	20,240 9,180	18,940 8,590	17,770 8,060	15,740 7,140	14,020 6,390	12,670 5,750	11,460 5,200			
213 ft 65 m	119 ft / 27,560 lbs 36.4m/12,500 kg	lbs kg	27,560 12,500		24,650 11,180	22,932 10,400	21,380 9,700	20,021 9,080	18,780 8,520	16,670 7,560	14,920 6,770	13,450 6,100				
197 ft 60 m	121 ft / 27,560 lbs 37.0m/12,500 kg	lbs kg	27,560 12,500		25,090 11,380	23,328 10,580	21,785 9,880	20,396 9,250	19,140 8,680	17,000 7,710	15,210 6,900					
180 ft 55 m	122 ft / 27,560 lbs 37.3m/12,500 kg	lbs kg	27,560 12,500		25,380 11,510	23,593 10,700	22,025 9,990	20,616 9,350	19,360 8,780	17,199 7,800						
164ft 50 m	121 ft / 27,560 lbs 37.0m/12,500 kg	lbs kg	27,560 12,500		25,150 11,410	23,395 10,610	21,830 9,900	20,440 9,270	19,180 8,700							
131 ft 40 m	118 ft / 27,560 lbs 35.9m/12,500 kg	lbs kg	27,560 12,500		24,255 11,000											

for 4-part operation

Hook Radius	4-Part line Max. Capacity/Radius	ft m	45 14.0	62 19.0	78 24.0	95 29.0	111 34.0	128 39.0	144 44.0	160 49.0	177 54.0	193 59.0	210 64.0	226 69.0	242 74.0	259 79.0
262 ft 80 m	48 ft / 55,125 lbs 14.8m/25,000 kg	lbs kg	55,125 25,000	40,219 18,240	29,855 13,540	23,240 10,540	18,676 8,470	15,325 6,950	12,745 5,780	10,716 4,860	9,085 4,120	7,717 3,500	6,570 2,980	5,600 2,540	4,762 2,160	4,035 1,830
246 ft 75 m	55 ft / 55,125 lbs 16.8m/25,000 kg	lbs kg	55,125 25,000	47,407 21,500	35,456 16,080	27,827 12,620	22,557 10,230	18,676 8,470	15,721 7,130	13,362 6,060	11,466 5,200	9,900 4,490	8,599 3,900	7,474 3,390	6,504 2,950	
229 ft 70 m	61 ft / 55,125 lbs 18.5m/25,000 kg	lbs kg	55,125 25,000	53,206 24,130	39,954 18,120	31,531 14,300	25,688 11,650	21,388 9,700	18,103 8,210	15,523 7,040	13,406 6,080	11,686 5,300	10,231 4,640	8,974 4,070		
213 ft 65 m	63 ft / 55,125 lbs 19.3m/25,000 kg	lbs kg	55,125 25,000	55,125 25,000	42,159 19,120	33,317 15,110	27,209 12,340	22,711 10,300	19,271 8,740	16,559 7,510	14,354 6,510	12,546 5,690	11,025 5,000			
197 ft 60 m	64 ft / 55,125 lbs 19.5m/25,000 kg	lbs kg	55,125 25,000	55,125 25,000	42,909 19,460	33,934 15,390	27,716 12,570	23,152 10,500	19,668 8,920	16,912 7,670	14,685 6,660	12,833 5,820				
180 ft 55 m	65 ft / 55,125 lbs 19.7m/25,000 kg	lbs kg	55,125 25,000	55,125 25,000	43,394 19,680	34,331 15,570	28,047 12,720	23,461 10,640	19,933 9,040	17,132 7,770	14,883 6,750					
164ft 50 m	64 ft / 55,125 lbs 19.6m/25,000 kg	lbs kg	55,125 25,000	55,125 25,000	42,997 19,500	34,023 15,430	27,783 12,600	23,218 10,530	19,712 8,940	16,956 7,690						
131 ft 40 m	62 ft / 55,125 lbs 19.0m/25,000 kg	lbs kg	55,125 25,000	55,125 25,000	43,041 19,520	34,045 15,440	27,805 12,610	23,240 10,540								