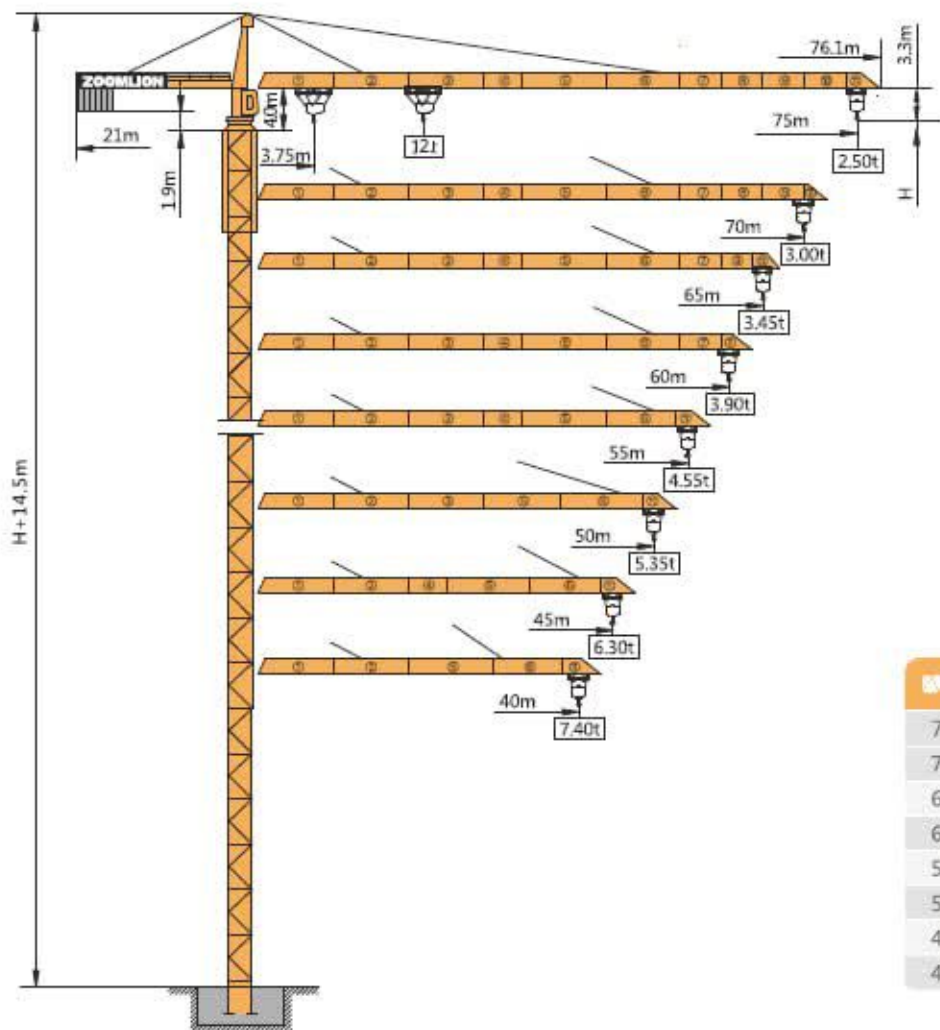


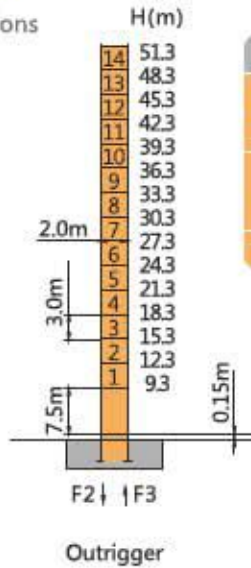
TC7525-12D Hammer-head Tower Crane



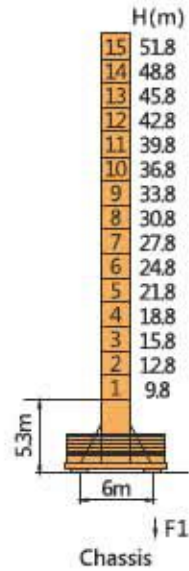
			PHZ4000	PHZ2500	PHZ1000
75m	20m	21000	4	2	0
70m	20m	20000	3	2	3
65m	20m	18500	4	1	0
60m	20m	17500	3	1	3
55m	20m	16000	4	0	0
50m	20m	14000	3	0	2
45m	20m	12000	3	0	0
40m	20m	10500	2	1	0

TC7525-12D

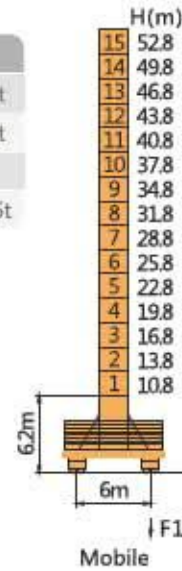
Masts / Reactions



Outrigger	
●	198t
■	205t
●	148t
■	156t
🔥	79t



Chassis	
●	91t
■	99t
🔥	85t
📦	105.6t



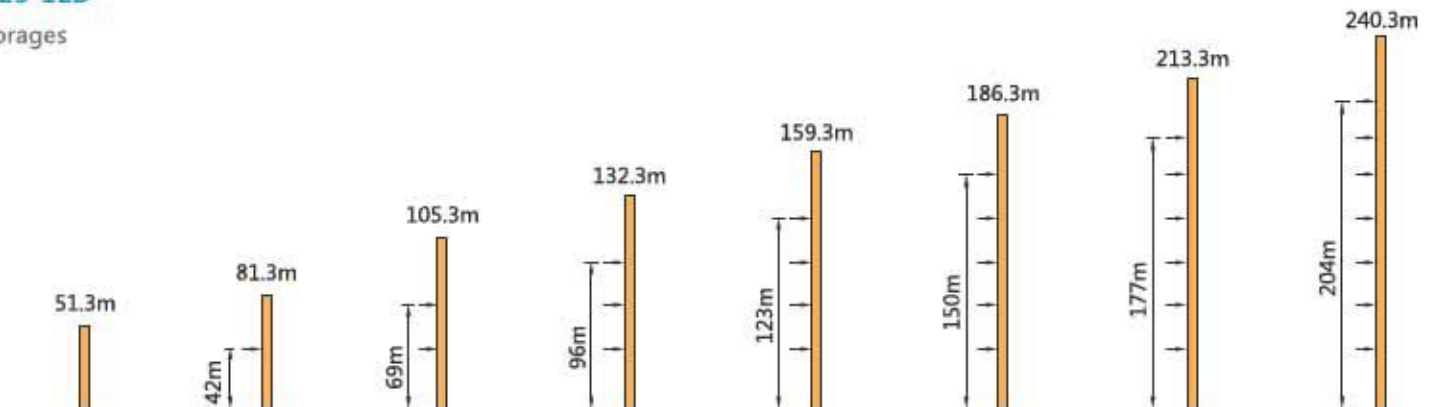
Mobile	
●	92t
■	100t
🔥	89t
📦	105.6t

- Reactions in service
- Reactions out of service
- 🔥 Weight with max free-standing height, max jib (without counter-weight and load)
- 📦 Ballast weight with max free-standing height

250t-m


TC7525-12D

Anchorage













TC7525-12D Hammer-head Tower Crane

TC7525-12D Load Diagrams

 R(m)		Max Capacity m/t	18.0	23.0	25.0	28.0	35.0	40.0	43.0	45.0	48.0	50.0	53.0	55.0	58.0	60.0	63.0	65.0	68.0	70.0	75.0
75 (R=76.1)	б	3.75~29.6/6.00	6.00			6.00	5.61	5.14	4.87	4.49	4.27	3.97	3.78	3.53	3.38	3.17	3.04	2.86	2.75	2.50	
	б _{сд}	3.75~15.5/12.00	12.00	9.93	8.96	6.00	5.81	4.84	4.37	4.09	3.72	3.49	3.19	3.01	2.76	2.60	2.40	2.27	2.09	1.97	1.72
70 (R=71.1)	б	3.75~31.5/6.00	6.00			6.00	6.00	5.55	5.26	4.86	4.62	4.30	4.10	3.84	3.67	3.45	3.31	3.12	3.00		
	б _{сд}	3.75~16.5/12.00	12.00	10.71	9.67	8.40	6.31	5.28	4.78	4.48	4.08	3.84	3.52	3.33	3.06	2.90	2.67	2.53	2.34	2.22	
65 (R=66.1)	б	3.75~32.5/6.00	6.00			6.00	6.00	5.77	5.46	5.05	4.80	4.47	4.27	3.99	3.83	3.59	3.45				
	б _{сд}	3.75~17/12.00	12.00	11.12	10.0	8.74	6.00	5.51	4.99	4.68	4.27	4.03	3.69	3.49	3.22	3.05	2.82	2.67			
60 (R=61.1)	б	3.75~33.0/6.00	6.00			6.00	6.00	5.87	5.56	5.14	4.89	4.56	4.35	4.07	3.90						
	б _{сд}	3.75~17.2/12.00	12.00	11.32	10.23	8.90	6.00	5.62	5.10	4.79	4.37	4.12	3.78	3.57	3.29	3.12					
55 (R=56.1)	б	3.75~34.2/6.00	6.00			6.00	6.00	6.00	5.81	5.37	5.11	4.76	4.55								
	б _{сд}	3.75~17.8/12.00	12.00	11.81	10.68	9.30	6.00	5.90	5.35	5.03	4.60	4.34	3.99	3.77							
50 (R=51.1)	б	3.75~35.5/6.00	6.00			6.00	6.00	6.00	5.62	5.35											
	б _{сд}	3.75~18.5/12.00	12.00	12.00	11.16	9.73	6.00	6.00	5.63	5.29	4.84	4.57									
45 (R=46.1)	б	3.75~36.6/6.00	6.00			6.00	6.00	6.00													
	б _{сд}	3.75~19.0/12.00	12.00	12.00	11.59	10.11	6.00	6.00	5.87	5.52											
40 (R=41.1)	б	3.75~37.4/6.00	6.00			6.00															
	б _{сд}	3.75~19.4/12.00	12.00	12.00	11.86	10.35	6.00	6.00													

TC7525-12D

Mechanisms

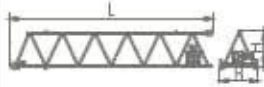

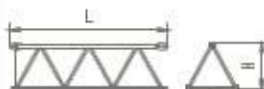
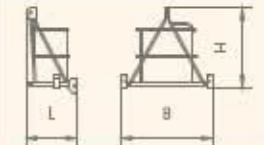

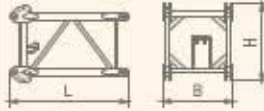
 Hoisting	Configuration						kW	
			V	IV	V	IV		
 Hoisting	QP1675	m/min	75	3.75	3.75	18.75	60	600mⓈ(6 layers)
		t	3	6	6	12		
 Slewing	HVV145B1.130A HVV145B2.130A	r/min	0~0.6				2×145 N.m	 Ⓢ Consult us If overtop
 Trolleying	BP110A	m/min	0~100				11	
 Travelling	ZA52-D B52-D	m/min	0~25				2×5.2	
	380V(±10%)50Hz		86+2×5.2 (kW)					

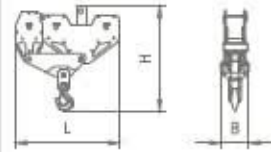
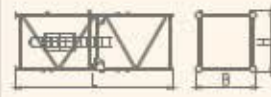
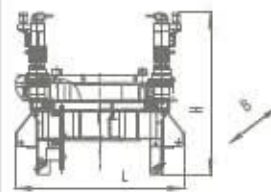
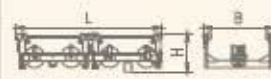
250t·m

TC7525-12D Hammer-head Tower Crane

TC7525-12D

Packing List

NO	Description	Sketch	L(m)	B(m)	H(m)	Weight Per piece(t)	Qty
1	Jib I		10.23	1.98	1.70	1.93	1
2	Jib II		10.21	1.73	1.60	1.83	1
3	Jib III		10.21	1.73	1.60	1.40	1
5	Jib V		10.21	1.73	1.60	1.20	1
6	Jib VI		10.21	1.73	1.60	1.11	1
7	Jib IV		5.21	1.73	1.60	0.60	1
8	Jib VII		5.21	1.73	1.60	0.60	1
9	Jib VIII		5.21	1.73	1.60	0.42	1
10	Jib IX		5.21	1.73	1.60	0.53	1
11	Jib X		5.21	1.73	1.60	0.39	1
12	Jib XI		1.20	1.98	1.70	0.16	1
13	Tower head		10.33	1.90	1.85	3.80	1
14	Slewing mast		3.12	2.09	2.27	2.99	1

NO	Description	Sketch	L(m)	B(m)	H(m)	Weight Per piece(t)	Qty
15	Hook		1.68	0.51	2.04	0.49	1
16	Climbing frame		7.30	2.81	2.76	4.27	1
17	Slewing assembly		2.80	2.70	2.60	6.90	1
18	Trolleying Mechanism		2.73	1.98	1.36	0.40	1

NO	Description	Sketch	L(m)	B(m)	H(m)	Weight Per piece(t)	Qty
19	Rear-Counter jib		10.70	2.00	1.85	6.50	1
20	Front-counter jib		10.80	1.75	0.83	2.60	1
21	Cabin		1.90	1.25	2.20	0.50	1
22	Base Tower Section		7.77	2.10	2.10	4.83	1
23	Sheet Section 4 pieces		3.30	0.48	2.00	1.77	13
24	Sheet Section 4 pieces		3.30	0.48	2.00	1.95	1

NO	Description	Sketch	L(m)	B(m)	H(m)	Weight Per piece(t)	Qty
25	Mobile Under Carriage : Whole Beam		8.94	1.00	0.95	1.70	1
26	Mobile Under Carriage : Semi Beam		4.34	0.52	0.92	0.81	2
27	ZA52-D Driving Dolly		1.25	0.85	0.90	0.87	2
28	B52-D Driven Dolly		1.25	0.85	0.90	0.62	2
29	Cable Reel		0.85	2.20	2.20	0.75	1

250t-III